

December 2009



*The National Cooperative  
Extension Support  
Staff Fraternity of the  
University of Kentucky*

The purpose of this Fraternity shall be to maintain the standards and ideals, and the morale, prestige and respect of the University of Kentucky Cooperative Extension Service support staff, to develop an effective working relationship and a spirit of fraternal friendship among the employees; to encourage professionalism; and to recognize, share, and reward professional excellence in job performance.

### Sister Chapters

Ohio State - Alpha Chapter  
Arkansas - Beta Chapter  
West Virginia - Delta Chapter  
Louisiana - Epsilon Chapter

We're on the web:  
Check it out  
<http://ces.ca.uky.edu/chies>

# Chi Epsilon Sigma

*Gamma Chapter*



## *Message from your President*

Happy Holidays Chi Epsilon Sigma!

Even with the hustle and bustle of the season, your Chi Epsilon Sigma officers and directors are working on plans for annual meeting. At our last board meeting, Stephanie was sworn in as Vice President and has officially assumed the duties of the office, the main one being chairperson of our annual meeting. She had actually already started working, gathering information and making contacts for our speakers. The board decided that we would try a Hawaiian theme this year and committees have been appointed for food, decorations, speakers, etc. Hawaii sounds really good right now, especially as cold as it is outside today. I would love to go there someday, but our Hawaiian annual meeting will probably be as close as I get to it. You will see a few familiar faces in the speaker lineup for the 2010 annual meeting, but the committee is working on some new ones as well.

I have to tell you all how proud I am of this group of officers and directors. Each and every one is so conscientious and really wants to do the best job they possibly can for you. They accept responsibilities to work on scholarship committees, awards committees, annual meeting committees, and travel to board meetings because they believe in Chi Epsilon Sigma and know that we can make a difference for the support staff of the Cooperative Extension Service.

Since it is the holidays, I was searching for something really profound to say. This may not be profound, but it comes from the heart. There's just so much to be thankful for. You know the older I

get, the more I come to truly appreciate the people in my life – my family, friends, co-workers and all of you. I am so very thankful for my wonderful husband and son. My best girl friend in the whole world is coming home to Owensboro after working in Frankfort for several years. She is like a sister to me and I just can't tell you what it will mean to have her home again. My extension family is a source of pride, laughter, and sometimes a little aggravation, but I can't imagine having a better bunch of folks to work with, and share learning and life experiences with.

I will leave you with a little something our FCS agent wrote for her December newsletter. It is a simple, sound suggestion for the holidays.

*I think most of us take this time of year to reflect on events of the past. We have all had Christmases that were happy and some that may have been especially sad. However, even on these occasions when we didn't feel especially merry, there was a person who stood out...someone who rallied to your need, or sent a card, or provided some food, or made you feel special. This year I challenge you to be that person for someone. This holiday season make it personal. Make someone's Christmas memorable!*

Have a safe and happy holiday season, my friends, and we'll see you next year.

*Lillie Thompson*  
President



Mary Baronet  
President  
Louisiana

Glenda Jenkins  
Vice President  
Mississippi

Tammy Morton  
Recording Secretary  
South Carolina

Sally Boulton  
Membership Secretary  
Kentucky

Christine Barrier  
Treasurer  
North Carolina

Tracy Brown  
Webmaster  
North Carolina

Donna Fulp  
Advisor  
North Carolina

## *The Extension and Research Support Staff Association (TERSSA)*

As some of you know, there has been interest in creating a national association. Several of the southern region states came together and formed the Southern Region Extension and Research Support Staff Association (SRERSSA) in 2007. They approached the CHIES chapters and invited us to join with them. The Ohio State and Kentucky Chapter Boards voted to ask them to join with us in becoming CHI chapters because, according to our name, we already are “national”.

Lillie and I attended their 1<sup>st</sup> annual meeting, November, 2008. Along with Louisiana, West Virginia, and Ohio, we presented this idea to the group. As with any new idea approach, we were met with optimism. All states involved in getting this organization off the ground were reluctant to approach their administration about changing their state association’s name. After much discussion and contemplation, the SRERSSA board decided that being known as the Southern Region association would limit the states that could be members, therefore the Southern Region status was dropped and the association became “**The Extension and Research Support Staff Association**” enabling the opportunity for all states to join. It was further decided this would be the best approach for all state associations to continue as formed but come together as a national group under the blanket name of TERSSA.

The basis on which this Association was formed is to improve the lives and careers of members by providing one voice to improve the development of Extension and Research across the nation through professional recognition, networking with states, administration advocacy, and professional and personal improvement. You already are a member of your state association, but this would be an opportunity to interact with other states with the same interests and goals as yourself.

A membership drive is ongoing until December 31<sup>st</sup>. Any support staff employed by an Extension or Research organization in any state is eligible to become a member of this growing Association. States already involved are North Carolina, South Carolina, Alabama, Mississippi, Louisiana, West Virginia, Arkansas, Ohio, and Kentucky.

Please take a few minutes to read the attached informational brochure. Also attached is a membership form. Anyone joining during this first membership drive will be considered a **Charter Member**.

I hope that you think this would be a great opportunity to interact with other states as well as other state support staff associations and consider joining. If you have any questions regarding **The Extension and Research Support Staff Association**, please feel free to contact me at [Sally.Boulton@uky.edu](mailto:Sally.Boulton@uky.edu). The brochure and membership application can also be found at the TERSSA website, <http://www.ces.ncsu.edu/assn/terssa/index.html>.

Attendees at 1<sup>st</sup> meeting of Southern Region Extension and Research Support Staff Association, Nashville, November 2008.





## Officers

President Elect: Kym Pope  
President: Lillie Thompson  
Vice President: Stephanie Crouch  
Secretary: Teresa Bright  
Past President: Charolette Arnett  
Treasurer: Kathy Ballard  
Annalist: Sally Boulton



## Directors

### Back Row, It to rt:

Fort Harrod: Kathy Clark  
Lincoln Trail: Genevieve Roso  
Pennyrile: Olivia Coleman Jones  
Purchase: Deena Myatt  
Bluegrass: Evonne Blackburn  
UK Campus: Marie Bechstein  
Wilderness Trail: Velma Mullins  
Mammoth Cave: Sherry Taylor  
Green River: Julie Stallings

### Front Row, It to rt:

Northeast: Gail Rice  
Louisville: Donna Knebel  
Northern KY: Marilyn Lauer  
Wilderness Trail: Brenda Saylor  
UK Campus: Marilyn Hooks

### Not pictured:

Licking River: Jan Law-Stevens  
Quicksand: Jackie Allen  
Lake Cumberland: Allison Taylor

**District 7** held their Support Staff/Assistants Meeting, November 24<sup>th</sup>, at Kentucky Dam Village with updates on Copyright Regulations and the new Secretary Evaluation. After lunch, the group had an interesting tour of Barkley Dam.



## Support Staff Meetings



On November 17, a day of training was held for **District 5 Support Staff**. Connie Conlee spoke to the group about Forms, Deadlines and Other Important Considerations followed by Connee Wheeler with updates on Copyright Regulations. After lunch, Dennis Morgeson, Washington County Extension Agent for Horticulture, gave some holiday decorating tips on a low budget.





## Hold Tight To Christmas

*Hold on to Christmas in your heart as you go step after step even without snow.*

*Hang tight to feelings of jingle bell joy and allow Christmas time to always deploy.*

*Let the Christmas season to live in your heart so that each little smile is not far apart.*

*Take with you daily a remembrance to see of Christmas smiles glowing in both you and me.*

*Hold tight to Christmas each day far and wide and allow it to always live deep inside.*

*By Bill Pearce*

## Tis the season . . . .

I love Christmas time. All the decorations, music, and food, but especially being with family and friends. I love decorating and try to have something new each year. And you know me, I love crafting so I thought I would share a few ideas that you and your kids/grandkids can make together.

Fill any size tin can with water and freeze. When frozen, use a hammer and nail to make holes around the rim, about 1/2 inch from top of can. Let ice melt and dry inside of can. Cut medium gauge wire into 36 inch length. Fold the wire in half and twist together. Loop each end through a hole in the can and twist around to secure and create handle. Tie ribbon bow around can and insert greenery between bow and can. Fill can with sand and place votive candle in the bottom. Can be hung or placed on ground, steps, outside table.

### Winter Luminaries



### Bag It!



Fold down the top of a bakery or lunch bag 2 inches or so from the edge. With a hole punch, make a hole through all the layers of the folded portion 1/2 inch down from the crease and about an inch in from one side. Make a matching hole on the opposite side of the bag. Open the bag and insert the gift (wrap food in plastic first). Then refold the top, thread ribbon through the holes and tie a fancy bow. Finally, slip a candy cane or lollipop between the bow and the bag.

Using acrylic paint, paint some paper cone cups green and let them dry (about 10 minutes), or you can use construction paper instead, roll it into cones, tape the seams, then trim the bottoms so they sit evenly.

Decorate the trees with garlands of glitter glue and glue on plastic gems for ornaments. Finally, glue together different-size stars cut from white and gold paper, write a guest's name on each pair, then tape or glue the stars atop the trees.

### Dinner Place Markers



**Special prayers for our troops and their families this Christmas season. Blessings on them every day.**



I have set up a Facebook group page for Chi Epsilon Sigma. It will be a great way to connect regarding the annual meeting and other events as well as keep in touch with members.

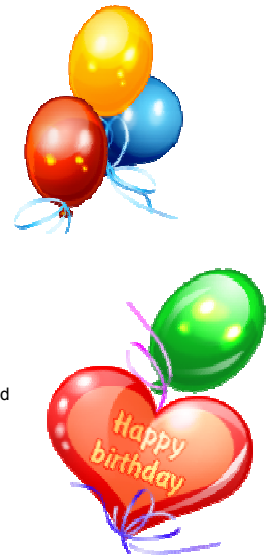
It is still in the works but I have the annual meeting listed as well as the national organization (TERSSA). I hope to have pictures of annual meeting posted soon. Maybe this month will slow down a little in a couple of weeks so I can get that done.

The only drawback is that you must have a Facebook account to join. So if you have an account, let me know and I will send a request for you to join.

Send newsletter information to [Sally.Boulton@uky.edu](mailto:Sally.Boulton@uky.edu).

## Happy Birthday

Marie Bechstein, Campus, December 7<sup>th</sup>  
Lori Whitlow, Daviess County, December 8<sup>th</sup>  
Kitty Simpson, Hopkins County, December 9<sup>th</sup>  
Velma Mullins, Laurel County, December 11<sup>th</sup>  
Cheryl Stepp, Estill County, December 11<sup>th</sup>  
Mollie Denney, Wayne County, December 12<sup>th</sup>  
Crystal Singleton, Rockcastle County, December 17<sup>th</sup>  
Crystal Jewel, Jessamine County, December 19<sup>th</sup>  
Jackie Allen, Robinson Station, December 20<sup>th</sup>  
Kay Cotton, Princeton Research Center, December 22<sup>nd</sup>  
Nancy Wallace, McCracken County, December 23<sup>rd</sup>  
Jenny Yarbrough, Jackson County, December 23<sup>rd</sup>  
Lissa Albright, Lincoln County, December 24<sup>th</sup>  
Barbara Jackson, Barren County, December 26<sup>th</sup>  
Patricia Jenkins, Boyd County, December 30<sup>th</sup>  
Angie Elliott, Morgan County, December 31<sup>st</sup>



Julie Beckman, Russell County, January 1<sup>st</sup>  
Cathy Howell, Jackson County, January 1<sup>st</sup>  
Shellie Castle, Jessamine County, January 2<sup>nd</sup>  
Pat Duncan, Harlan County, January 4<sup>th</sup>  
Susan Shaw, Campus, January 5<sup>th</sup>  
Cindy Sullivan, Gallatin County, January 5<sup>th</sup>  
Sherry Taylor, Warren County, January 7<sup>th</sup>  
Teresa Powell, Hardin County, January 8<sup>th</sup>  
Brenda Saylor, Rockcastle County, January 9<sup>th</sup>  
Judy Bates, Wayne County, January 11<sup>th</sup>  
Becky Filiatreau, Nelson County, January 11<sup>th</sup>  
Karen Graham, Powell County, January 11<sup>th</sup>  
Rosalee Bradley, Robinson Station, January 15<sup>th</sup>  
Debbie Dunn, Campus, January 24<sup>th</sup>  
Margie Horning, Princeton Research Center, January 30<sup>th</sup>  
Donna Thompson, Jefferson County, January 30<sup>th</sup>

## Brag Corner



**Isabella Grace,**  
granddaughter  
of Sherry Taylor,  
Warren County,  
Mammoth Cave  
Area Director

**Ace Alexander Childress,**  
born September 30<sup>th</sup>,  
1<sup>st</sup> grandson of  
Linda Childress,  
Hart County.

**Talk about a  
family tree:**  
Linda Tapp,  
Webster County,  
has 6 sets of 5  
generations in her  
family!!

*Fall 2009*



*The National Cooperative  
Extension Support  
Staff Fraternity of the  
University of Kentucky*

The purpose of this Fraternity shall be to maintain the standards and ideals, and the morale, prestige and respect of the University of Kentucky Cooperative Extension Service support staff, to develop an effective working relationship and a spirit of fraternal friendship among the employees; to encourage professionalism; and to recognize, share, and reward professional excellence in job performance.

### **Sister Chapters**

Ohio State - Alpha Chapter  
Arkansas - Beta Chapter  
West Virginia - Delta Chapter  
Louisiana - Epsilon Chapter

We're on the web:  
Check it out:  
<http://ces.ca.uky.edu/chies>

# *Chi Epsilon Sigma*

*Gamma Chapter*

# News

## *Message from your President*

Dear CES Friends:

The holiday season is almost here. Oh yes...it is. Thanksgiving is less than a month away and then Christmas won't be far behind. Just think...relaxing time with family and friends. I am truly looking forward to it, but where has this year gone?



Time does go by quickly, but try to make time to take full advantage of your Chi Epsilon Sigma membership. Now that you have returned as a member or joined for the first time, keep abreast of the information that is sent out by email and posted to the website about happenings such as the various scholarships that are available. The child/grandchild scholarship was just awarded last month. Information about other scholarships is on our website.

Staff Appreciation Day was October 21. It was good to see members as well as Administration at our breakfast reception. Getting to see everyone is the best part for me.

Sadly, after Staff Appreciation, we won't be together as a whole group again until our annual meeting in April, but we so look forward to that. It is a time of learning, fellowship, friendship, and sharing. Most see it as a professional development opportunity; some view it as a mini vacation; still others are just glad to get out of the office for a couple of days. It really doesn't matter why you go, just go if at all possible. You will take something back with you...I always do. Maybe it's a tip on Office 2007 or a website to get

more information on something. It could be a new friendship, or renewing one with someone you haven't seen in awhile, or maybe it is putting a face with a name you have seen on email many times.

Another way to take advantage of your membership is recognition through awards at annual meeting. There are cash, certificates, and plaques awarded for the various categories which include: Distinguished Service, County Website, Media, New Achiever, Good Friend, and Jovial.

Realizing your leadership potential is probably one of the most important things you can take advantage of with this organization. Attending annual meeting is the key to understanding what Chi Epsilon Sigma is and experiencing firsthand what we are all about. There are opportunities to serve on committees or on the board as an officer or director. When I first joined Chi Epsilon Sigma as a charter member, I had no idea of the impact it would have on me, my relationships, and personal and professional growth. Whoever envisioned that I would end up president of this wonderful organization one day (actually not once, but twice...go figure)? Evidently those that I served with on the board saw something in me that I did not see in myself. I have learned a great deal from spending time with and watching those leaders that have gone before me.

Continued next page...

Ladies and gentlemen, congratulations on the choice you have made to join this wonderful organization. Chi Epsilon Sigma is a group you can be proud to say that you are a part of. And, as always, if you have questions about anything, contact your Chi Epsilon Sigma area director or any of the officers. We are happy to help.

*Lillie Thompson*  
CES President

### Staff Appreciation Day October 21st

Chi Epsilon Sigma breakfast reception was held that morning. What a great crowd we had! Several administration personnel as well as members enjoyed the fellowship before taking off to the booths and lunch. Picture link to be on website soon.

Linda Martin, Logan County Staff Assistant, was nominated in the clerical division for the 12<sup>th</sup> Annual College of Agriculture Outstanding Staff Awards!! Way to go, Linda!!!

#### A note from Marilyn Hooks, Door Prize Chairman:

Thanks to Chi Epsilon Sigma for the \$25 Wal-Mart Gift Card for our Staff Appreciation Day. Also thanks to all those Chi members who donated either to represent their County or as a Chi member. It was another successful year because of you!

## Way to Go!

**Membership Drive - WOW!**  
We have 175 members: 157 returning and 18 new.

## Vice President



In September, Amy Branstetter resigned as Vice President of Chi Epsilon Sigma. This came as the result of her becoming the 4-H Agent in Metcalfe County. We regret that Amy had to resign, but wish her the very best in her new position.

According to the bylaws, when a vacancy occurs, the Executive Board will appoint someone to fill the position within 30 days. On behalf of the Executive Board, I am proud and happy to announce that **Stephanie (Mann) Crouch, Bath County**, was appointed and has agreed to be Vice President of Chi Epsilon Sigma. She will finish the current term and move up to the President-elect position at annual meeting. We appreciate Stephanie's willingness to serve in this key position for our organization.

A bit of info:

My name is Stephanie Crouch (some of you may remember me as Stephanie Mann). My husband Mike and I were married on June 20<sup>th</sup> of this year. I have one son, Jesse Mann, who is 12 years old, and also a step-daughter, Katie, who is 11. I enjoy spending time with my family, decorating my home, participating in church activities and cheering on the UK football and basketball teams.

I have been a staff assistant for the Bath County Extension Service for 3½ years, and a member of Chi Epsilon Sigma for 3 years. I am honored to have been chosen Vice-President of Chi Epsilon Sigma and look forward to serving with you.



## Lake Cumberland 4-H Center

(Formerly Kentucky Leadership Center)

**Celebrates 25 years!**  
**December 15, 2009**  
11:00 a.m.

Refreshments/Hors  
d'oeuvres  
Music and Honored  
Guests



Congratulations to our old stomping ground who is celebrating their 25<sup>th</sup> anniversary! Tickets are limited. \$20.00 each. To reserve your ticket, call 270-866-4215 or email [joyce.belcher@uky.edu](mailto:joyce.belcher@uky.edu) by November 15<sup>th</sup>.

Chapter Awards –

Distinguished Service, County Web Site Maintenance, New Achiever, Media, Good Friend, & Jovial. Deadline March 5, 2010, contact Marilyn Lauer.

Professional/Personal Improvement Scholarship -

Deadline March 15, 2010, contact Evonne Blackburn or Gail Rice.

Higher Education Scholarship -

Deadline April 9, 2010, contact Evonne Blackburn or Gail Rice.



April



Hannah

## Chi Epsilon Sigma Chapter Awards

Would you like to have a chance at recognition for the exceptional work that you've done this year with Newsletters, Brochures and/or Web sites? Do you think your co-worker deserves the Good Friend or most Jovial award of the year? Apply for the Chi Epsilon Sigma Gamma Chapter Awards! Entries will be due March 5, 2010.

Special recognition is made at the CES Annual Meeting in April. Winners either receive a plaque and money or a trophy.

Watch for an email or check the website for application and contest rules. The entry form is to be attached to each entry along with a one-page description.

So come on CES Members... let's see your creative side!!!

## CHI EPSILON SIGMA IS GIVING AWAY MONEY! \$\$\$\$\$\$\$\$\$\$

Are you taking any **college** courses right now?? Have you taken a **workshop** or plan on taking a workshop or class?? If you could answer **YES** to either of these questions, you should apply for one of the Chi Epsilon Sigma scholarships! **This is your money!** Applications are on the website.



### *Child/Grandchild Scholarship*

I would like to thank everyone who submitted an application this year. We had a total of 5 applications! After much consideration I am pleased to announce the winners of the Chi Epsilon Sigma Child/Grandchild Scholarship this year – they are April Renee Bowling and Hannah B. Conn. April is the daughter of Velma Mullins, Laurel County and Hannah is the daughter of Barbara Conn, Bath County. Both have received their \$250 scholarship checks.

April received her Associates Degree last spring from Somerset Community College and is taking the last few remaining classes before attending Midway College in January to pursue her degree in Elementary/Middle School Education with an emphasis in mathematics.

Hannah has started her first year at Morehead State University seeking a career in Graphic Advertising.

Thanks again to everyone who applied and congratulations to April and Hannah!

Sherry Taylor, Chairperson  
Mammoth Cave Area Director





# Staff Appreciation 2009



## Officers

President Elect: Kym Pope  
President: Lillie Thompson  
Vice President: Stephanie Crouch  
Secretary: Teresa Bright  
Past President: Charolette Arnett  
Treasurer: Kathy Ballard  
Annalist: Sally Boulton



## Directors

### Back Row, It to rt:

Fort Harrod: Kathy Clark  
Lincoln Trail: Genevieve Roso  
Pennyrile: Olivia Coleman Jones  
Purchase: Deena Myatt  
Bluegrass: Evonne Blackburn  
UK Campus: Marie Bechstein  
Wilderness Trail: Velma Mullins  
Mammoth Cave: Sherry Taylor  
Green River: Julie Stallings

### Front Row, It to rt:

Northeast: Gail Rice  
Louisville: Donna Knebel  
Northern KY: Marilyn Lauer  
Wilderness Trail: Brenda Saylor  
UK Campus: Marilyn Hooks

### Not pictured:

Licking River: Jan Law-Stevens  
Quicksand: Jackie Allen  
Lake Cumberland: Allison Taylor



**You The Man!**

### Mammoth Cave Area News

Amanda Hawkins, Logan County, gave birth to her first child, Anslee, August 21<sup>st</sup>. Anslee weighed 7 lbs 13 ozs.

### Pennyrile Area News

Congratulations to Olivia Coleman Jones, Lyon County, who surprised us all and got married on the sunny beaches of Florida.



### Purchase Area News

Welcome to Kelly Mathis, staff assistant, Graves County.

### District Happenings

District 5 will be having their Staff Assistant Training, November 17<sup>th</sup>.

District 6 had a Staff Assistants Training, October 28<sup>th</sup>, in Daviess County.

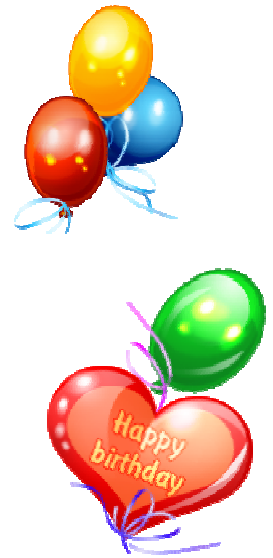
District 7 is having their Fall Secretary/Assistant Training, November 24<sup>th</sup>, at Kentucky Dam Village.



Send newsletter information to [setanner@uky.edu](mailto:setanner@uky.edu).

## Happy Birthday

Kathy Adams, Hopkins County, October 1<sup>st</sup>  
Judy Hisel-Rose, Jackson County, October 2<sup>nd</sup>  
Lisa Gillim, Daviess County, October 6<sup>th</sup>  
Julie Stallings, Daviess County, October 7<sup>th</sup>  
Eileen Estridge Kopp, Laurel County, October 9<sup>th</sup>  
Sharon Fowler, Jefferson County, October 10<sup>th</sup>  
Nelda Snead, Todd County, October 13<sup>th</sup>  
Jan Law-Stevens, Rowan County, October 14<sup>th</sup>  
Diana Kasirosafar, Campbell County, October 15<sup>th</sup>  
Stephanie Mann, Bath County, October 16<sup>th</sup>  
Alice Craft, Letcher County, October 20<sup>th</sup>  
Gil Thurman, Franklin County, October 20<sup>th</sup>  
Barbara Conn, Bath County, October 22<sup>nd</sup>  
Lillie Thompson, Daviess County, October 27<sup>th</sup>  
Kathy Ballard, Nelson County, October 29<sup>th</sup>



Betty Warren, Campus, November 5th  
Olivia Coleman Jones, Lyon County, November 7<sup>th</sup>  
Sharon Corbin, Pendleton County, November 8<sup>th</sup>  
Amanda Howard, Magoffin County, November 9<sup>th</sup>  
Alta Hutchinson, Wayne County, November 11<sup>th</sup>  
Karen Rich, Hart County, November 11<sup>th</sup>  
Vickie Hatler, Caldwell County, November 12<sup>th</sup>  
Lorene Coots, Leslie County, November 13<sup>th</sup>  
Gaye Ledford, Trigg County, November 19<sup>th</sup>  
Tabatha Carman, Daviess County, November 23rd  
Amanda Francis, Todd County, November 23<sup>rd</sup>  
Gwen O'Cull, Fleming County, November 23<sup>rd</sup>  
Rebecca Shagool, Hardin County, November 23rd

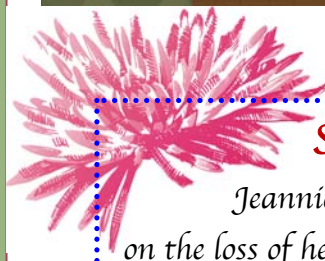
## Brag Corner



**Future Wildcat!!**  
Nathan, grandson of Sally Boulton, Annalist.



**This little cutie is Emily, grand daughter of Marilyn Hooks, Princeton Research Center. Check out those curls!!**



### Sincere Sympathy

Jeannie Garrison, Calloway County,  
on the loss of her mother, Mary McClure Kinsolving.



August 2009



*The National Cooperative  
Extension Support  
Staff Fraternity of the  
University of Kentucky*

The purpose of this Fraternity shall be to maintain the standards and ideals, and the morale, prestige and respect of the University of Kentucky Cooperative Extension Service support staff, to develop an effective working relationship and a spirit of fraternal friendship among the employees; to encourage professionalism; and to recognize, share, and reward professional excellence in job performance.

### Sister Chapters

Ohio State - Alpha Chapter  
Arkansas - Beta Chapter  
West Virginia - Delta Chapter  
Louisiana - Epsilon Chapter

We're on the web:  
Check it out:  
<http://ces.ca.uky.edu/chies>

# Chi Epsilon Sigma

Gamma Chapter

# News

## Message from your President



Dear CES Friends:

I can't believe that summer is almost over! Across the state, county fairs have been in full swing, state fair is now upon us, and the new school year is about to begin. County fairs, nutrition programs, field days, master cattleman programs, extension master gardener programs, newsletters, web design, 4-H enrollment, community education, and clientele inquiries all depend on and owe their successes to support staff people such as you.

As the professional fraternity for UK Cooperative Extension Service support staff, Chi Epsilon Sigma has much to take pride in, and we are particularly proud of the members that make up our organization. You are an awesome group of professional, compassionate, and hard-working individuals.

Being an officer in this organization has given me the confidence to advocate for the group, firsthand experience in conducting business meetings, personal interaction with other members from across the state, and the ability to expand my leadership horizons. I thank you for honoring me by selecting me to be president for a second time. Chi Epsilon Sigma is so near and dear to my heart.

It will soon be time for our membership renewals. As the membership drive draws near, it is important to remember that Chi Epsilon Sigma offers opportunities for your professional growth and development. There are scholarships available for Professional/Personal Improvement, Higher Education, and even a Child/Grandchild Scholarship.

In addition, Chi members have the chance to be recognized for their outstanding work throughout the year at our spring annual meeting through awards such as media and newsletters, web site design, distinguished service, and new achiever awards.

Speaking of annual meeting...mark your calendar and plan to be with us at Lake Cumberland, April 15-16, 2010!

And don't forget...Staff Appreciation Day is October 21. We will have our annual reception in the Culton Suite at the Good Barn, 9:00 a.m. that morning. I hope you plan to be there!

For now I leave you with this quote by Booker T. Washington: *Excellence is to do a common thing in an uncommon way.* And my friends, this is something we all do every day, so be proud of yourself, your accomplishments, and the work you do. See you soon!

*Lillie Thompson*

CES President



## Jenny Wiley State Park



# 2009 Annual Meeting



It was quite an experience traveling to Eastern Kentucky for our 2009 Annual Meeting at Jenny Riley State Resort Park. Special thanks to Vice President Kym Pope and her committees for all their hard work in putting this event together.

A mini play on Little Women was presented through the Pike County Fine Arts agent, Stephanie Richards.

Thursday breakout sessions included:  
Generations at Work  
Digital Photography Boot Camp 101  
What Women Want  
Building A Stronger Community Through Quality Arts  
True Colors  
Exploring Our Energy

Activities for the evening were a trip to "Hillbilly Days" Festival or enjoying the hospitality/game room.

On Friday, David Adams, District 1 Director, welcomed the group to eastern Kentucky and congratulated Chi Epsilon Sigma on an excellent conference.

Rodger Bingham, Kentucky Department of Agriculture, was our closing speaker. Mr. Bingham brought greetings from Richie Farmer, Commissioner of Ag, as well as bringing us up to date on the Agriculture Economic Outlook.



If you remember, Mr. Bingham was also a guest speaker at our 2002 Annual Meeting, "Survivor: It's a Jungle Out There", and answered questions relating to his experience on the reality show, "Survivor."



## 2010 Annual Meeting – April 15 - 16

Lake Cumberland State Resort Park  
5465 State Park Road  
Jamestown, KY 42629-7801  
800-325-1709

# Save The Date!

### *Honorary Members*

Dr. Paul Warner  
 Dr. John Mowbray  
 Ms. Susan Sponcil  
 Dr. Martha Nall  
 Ms. Lee Ann Johnson  
 Mr. Doug McLaren  
 Ms. Amanda Gumbert  
 Ms. Joyce Doyle  
 Ms. Malinda Cooper

### Professional/Personal Improvement Scholarship -

Deadline March 15, 2010, contact Gail Rice

### Higher Education Scholarship -

Deadline April 9, 2010, contact Evonne Blackburn



### Last Year's recipients:

Sara Magan Edwards and Cameron Lee Edwards, children of Sharon Edwards, Webster County.

## *Membership Drive*

### **Why should you join Chi Epsilon Sigma?**

#### **CES provides:**

- Opportunities to enhance job skills
- Opportunities to develop leadership skills & serve in leadership roles
- Opportunities to earn scholarship awards
- Opportunities to be recognized and awarded for professional excellence
- Opportunities for interaction with other Extension staff members
- Opportunities to plan and participate in annual meeting



Membership Dues: Deadline is September 30<sup>th</sup>. Check the website for Membership Form.

## **CHI EPSILON SIGMA IS GIVING AWAY MONEY! \$\$\$\$\$\$\$\$\$\$**

Are you taking any **college** courses right now?? Have you taken a **workshop** or plan on taking a workshop or class?? If you could answer **YES** to either of these questions, you should apply for one of the Chi Epsilon Sigma scholarships! **This is your money!** Applications are on the website.



### *Child/Grandchild Scholarship*

Do you have a child or grandchild who will be attending college this fall? Would you like a little help on tuition? Chi Epsilon Sigma will again be offering **(2) \$250.00 scholarships** to a child or grandchild of a member. All you have to do is get your child/grandchild to fill out the application (on the website) and submit with a 500 word essay, proof of enrollment and class schedule before **September 15** to the address below. If you have any questions, please feel free to contact me.

Get those applications in and good luck to all!

Sherry Taylor, [sherry.taylor@uky.edu](mailto:sherry.taylor@uky.edu)  
 Warren County Extension Office  
 3132 Nashville Road  
 Bowling Green, KY 42101  
 Phone: 270-842-1681 Fax: 270-842-1684





## Officers

President Elect: Kym Pope  
 President: Lillie Thompson  
 Treasurer: Kathy Ballard  
 Past President: Charolette Arnett  
 Vice President: Amy Hogan  
 Annalist: Sally Boulton  
 Secretary: Teresa Bright  
 (not pictured)



## Directors

### Back Row, It to rt:

Purchase: Deena Myatt  
 UK Campus: Marie Bechstein  
 UK Campus: Marilyn Hooks  
 Green River: Julie Stallings  
 Lincoln Trail: Genevieve Roso  
 Wilderness Trail: Velma Mullins  
 Louisville: Donna Knebel

### Front Row, It to rt:

Mammoth Cave: Sherry Taylor  
 Pennyrite: Olivia Coleman  
 Lake Cumberland: Allison Taylor  
 Wilderness Trail: Brenda Saylor  
 Northern KY: Marilyn Lauer

### Not pictured:

Bluegrass: Evonne Blackburn  
 Fort Harrod: Kathy Clark  
 Licking River: Jan Law-Stevens  
 Northeast: Gail Rice  
 Quicksand: Jackie Allen

## *Dr. Paul Warner*

### Chi Epsilon Sigma Honorary Member

On April 30th, Dr. Paul Warner ended one phase of his career and entered a 60% post retirement appointment.

Over a period that spans 35 years, Dr. Warner has provided leadership for the Kentucky Cooperative Extension Service, the southern region, and the nation. He has served as Assistant Director for Program and Staff Development for 18 years and during that time he has assumed the role of Interim Associate Director on three different occasions. The last term as interim was immediately following the tragic death of Dr. Larry Turner. His leadership and guidance during a very hard time was sound and at the same time compassionate.



At the state, regional and national levels, Dr. Warner has had a significant and lasting influence on how Cooperative Extension operates. Under Dr. Warner's influence, the Southern Region Program and Staff Development Committee has developed two sets of SEAL materials (Strengthening Extension Advisory Leaders), CECF modules, a regional training conference for Program and Staff Development professionals, a review of leadership programs in the south, and a white paper on "Measuring Extension's Performance in the Age of Engagement" that was the precursor of the current national effort on "Excellence in Extension."

Dr. Warner has had many honors over his career, including being elected President of the National Community Development Society, the Award of Excellence in Extension by the Rural Sociological Society, and the Visionary Award by the Kentucky Chapter of Epsilon Sigma Phi.

In April, Dr. Warner was selected by the Association of Southern Region Extension Directors to receive the Southern Extension Service Award for Excellence in Leadership for exhibiting the "highest level of excellence by enhancing the cause and performance of the association, the vision and performance of Extension programs in the region and nationally, and of the Land-Grant system."

Dr. Warner became an Honorary Member of Chi Epsilon Sigma in September, 1999. ***We truly appreciate his support and consider that involvement among his many accomplishments in Extension! Thank you, Dr. Warner, for believing in Chi Epsilon Sigma and being a guide for our organization!***



Congratulations to Karen Ramage who will be assuming the position of Assistant Extension Director for Operations, effective Monday, August 17. Karen has extension experience at the County, Area and District level in Kentucky, and is well respected by staff, agents, faculty and administration. She served as District 7 Director and is also a huge supporter of Chi Epsilon Sigma.

### Bluegrass Area News

Congratulations to Venita Wood, Harrison County 32 years of service AND 32 years of marriage!

Welcome Heather Russell, staff assistant, Harrison County.

### Mammoth Cave Area News

Sara Gosset, Warren County Office, engaged on August 5.

Amanda Hawkins, Logan County, expecting a little girl later this month.

### Pennyrile Area News

Gaye Ledford, Trigg County, welcomed a new granddaughter in June, Emmalee Marie.



### Purchase Area News

Congratulations to Cynthia Larkins, Hickman County, on the birth of a new grandson, Trigg Michael, July 23<sup>rd</sup>.



### Wilderness Trail Area News

Welcome Cathi J. Tubbs, Laurel County 4-H Staff Assistant.



June Johnston, West KY Research Center, a TRUE BLUE UK fan.

## Happy Birthday

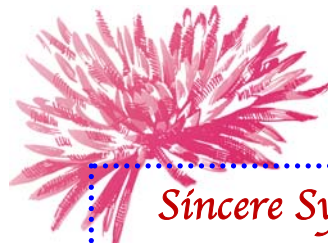
Sally Boulton, Ballard County, July 12<sup>th</sup>  
Teresa Bright, Adair County, July 25<sup>th</sup>  
Shirley Buford, Livingston County, July 26<sup>th</sup>  
Debbie Covington, Kenton County, July 31<sup>st</sup>  
Judy Creech, Nelson County, July 22<sup>nd</sup>  
Tammy Damron, Pike County, July 1<sup>st</sup>  
Felicia Davenport, Hart County, July 7<sup>th</sup>  
Sharon Edwards, Webster County, July 7<sup>th</sup>  
Amanda Hawkins, Logan County, July 1<sup>st</sup>  
Marilyn Hooks, Princeton UKREC, July 7<sup>th</sup>  
Kaye Johning, Pendleton County (retired), July 18<sup>th</sup>  
Sue Latino, McCracken County, July 7<sup>th</sup>  
Sarah Lewis, Floyd County, July 10<sup>th</sup>  
Janet McDowell, Anderson County, July 21<sup>st</sup>  
Gail Rice, Greenup County, July 18<sup>th</sup>  
Sandy Rosenberger, UK Campus, July 22<sup>nd</sup>  
Lisa Stevens, Pulaski County, July 6<sup>th</sup>  
Allison Taylor, Pulaski County, July 15<sup>th</sup>



Charolette Arnett, Monroe County, August 19<sup>th</sup>  
Barbara Campbell, Fleming County, August ??  
Joyce Cardenas, Marion County, August 7<sup>th</sup>  
Wanda Denniston, Wolfe County, August 6<sup>th</sup>  
June Johnston, Princeton UKREC, August 10<sup>th</sup>  
Mary Ann Kelley, Princeton UK REC, August 3<sup>rd</sup>  
Melody Mays, Marion County, August 15<sup>th</sup>  
Donna Mullins, Menifee County, August 25<sup>th</sup>  
Vernell Sheets, Morgan County, August 29<sup>th</sup>  
Abby Tate, LaRue County, August 5<sup>th</sup>  
Melinda Wood, Crittenden County, August 13<sup>th</sup>

### Congratulations!

Sally Boulton, Ballard County, welcomed a new grandson, Nathan Earl Watson, March 6, 2009. Isn't he a cutie!!



### Sincere Sympathy

Patt Thompson, UK Campus, lost her husband to prostate cancer, March 17, 2009.

### Prayer List

Erica Simpson, daughter of Kitty Simpson, Hopkins County, recently went thru some tough tests to be placed on the Kidney Transplant list. Please keep Kitty and her family in your prayers.